

DrugCaster_x

Community Overdose Preparedness Tool

OVERVIEW

Problem Solved:

- Reducing the percent of overdoses that result in death through the use of real-time crime data in conjunction with overdose tracking

Focus:

- Provide a single, comprehensive monitoring and response tool accessible via web/mobile
- Leverage existing same/next day data sources (ROAR/911, ODMAP, police, first responders)

Features/Benefits:

- Provides immediate visibility into drug and crime related activity
- Aggregates multiple sources into a single cloud based database
- Correlates crime and drug use data to enable forecasting by neighborhood/zip code

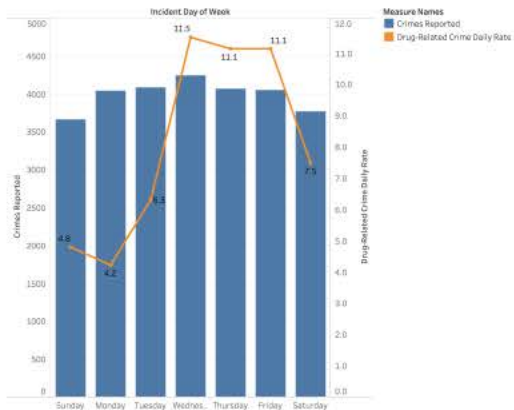
Audience:

- Public Health Officials (Richmond pilot)

Crime by Day of Week

Drug related crime is twice as prevalent (as a percent of total crime) Thursdays, Saturdays, & all other days. Data here is from Richmond police department's open query form and covers March - September, 2017 (roughly).

Source: <http://seerious.crimetec.ca.ca/apoliticians/streetcrime/index.asp>

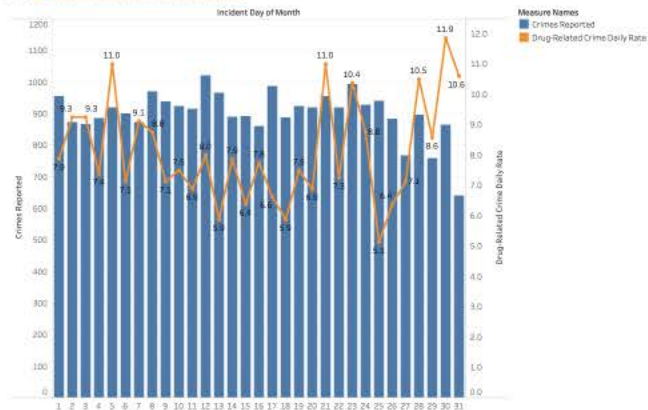


The trends of Crimes Reported and Drug-Related Crime Daily Rate for Incident Day of Week. Color shows details about Crimes Reported and Drug-Related Crime Daily Rate. For pane Drug-Related Crime Daily Rate: The marks are labeled by Drug-Related Crime Daily Rate. The data is filtered on Incident Date Year, which excludes 2017.

Crime by Day of Month

We may be seeing an increase in overdose and other drug-related crimes occurring shortly after typical 1st and 15th day paydays / start of a refresh days. Data here is from Richmond police department's open query form and covers March - September, 2017 (roughly).

Source: <http://seerious.crimetec.ca.ca/apoliticians/streetcrime/index.asp>



The trends of Crimes Reported and Drug-Related Crime Daily Rate for Incident Day of Month. Color shows details about Crimes Reported and Drug-Related Crime Daily Rate. For pane Drug-Related Crime Daily Rate: The marks are labeled by Drug-Related Crime Daily Rate. The data is filtered on Incident Date Year, which excludes 2017.

Social Link

Social Link

About

Privacy

Press

Support

Social Link

Blog

Careers

Terms

FAQ

More...

Tableau Demonstration

REQUIREMENTS/FUTURE ENHANCEMENTS

REQUIREMENTS

- API Connectivity with required data sources (ODMAP, Police Reports, etc)
- Access to list of area responders
- Active participation from all parties

ENHANCEMENTS

- HIE integration as a source of overdose data determined by Trigger Drug (naloxone) administration
- Better risk profiling for correlation of weather patterns, criminal activity, demographics, etc
- Collaboration with REVIVE! and other educational programs using DrugCasteR analytics
- Integration with eDispatches System (call tree functionality)

APPENDIX

- REVIVE! (opioid overdose and naloxone education program for VA)
 - Added 1224 lay rescuers, 339 trainers and 65 law enforcement agencies YTD 2017.
 - Naloxone made available for 200 people in need YTD from REVIVE! efforts.