

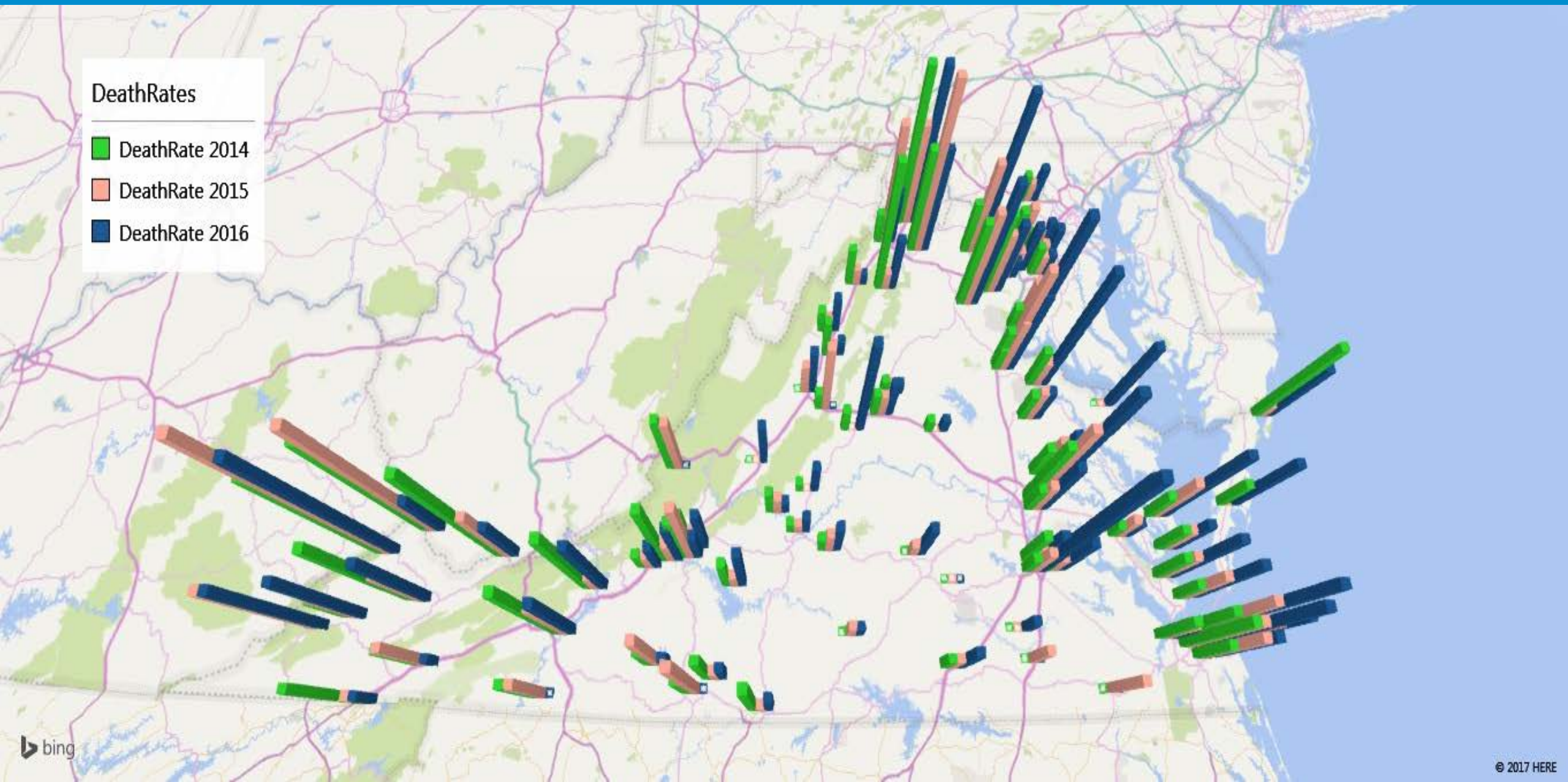
# The Virginia Model

APPLYING THE ICELANDIC MODEL IN THE COMMONWEALTH

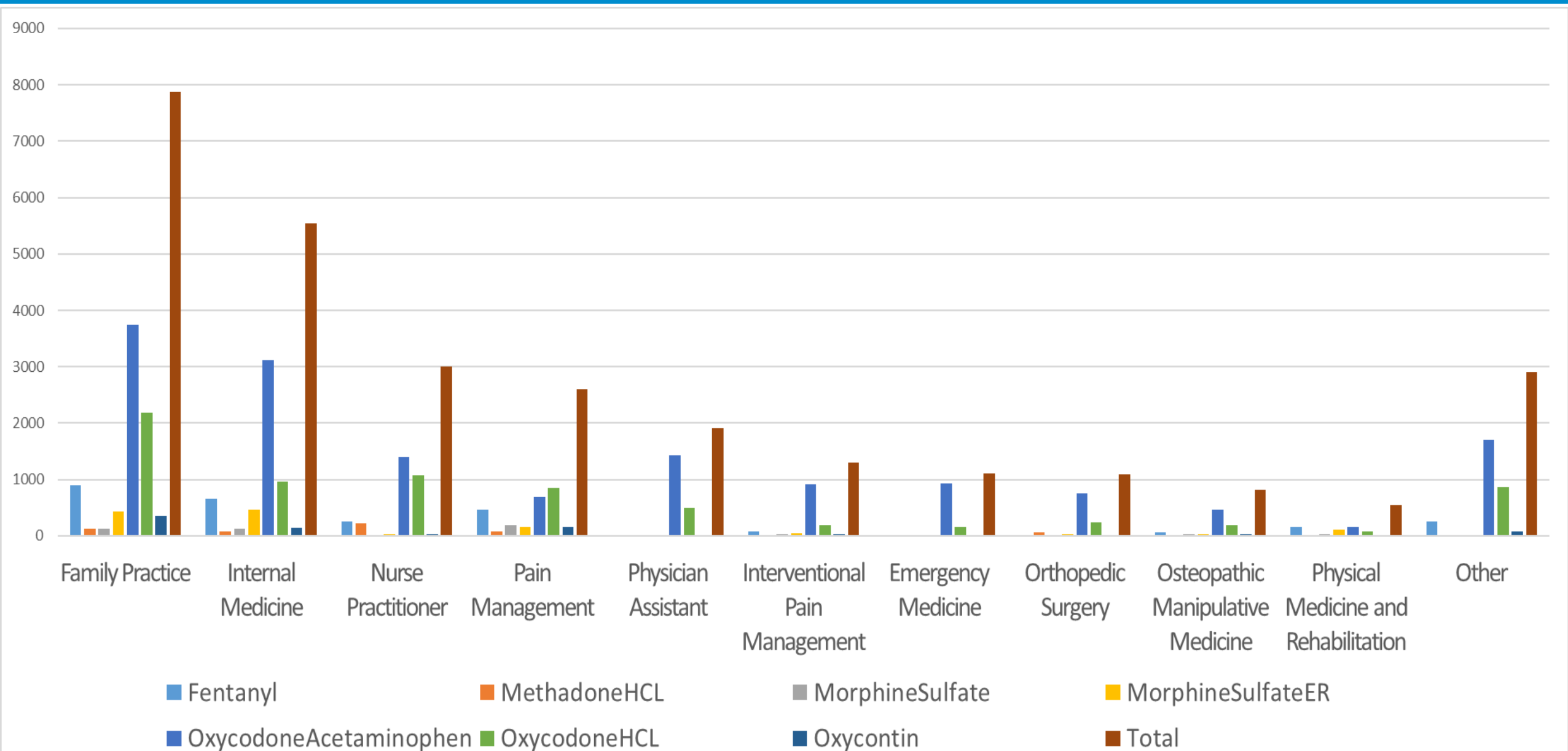
# Hot Spots, Death Rates are Rising

## DeathRates

- DeathRate 2014
- DeathRate 2015
- DeathRate 2016



# Virginia Total Opiate Prescriptions by Prescribers 2014



## What we found using Machine Learning...

- ▶ The most significant factor was County,  $2.9 \times 10^{-7}$ , EXTREMELY SIGNIFICANT
- ▶ Natural Hotspots of Opiate use and Death.
- ▶ The use of a Targeted Approach would be most effective.
- ▶ Societal stressors such as unemployment/poverty are LOCATION BASED

# THE Icelandic Model

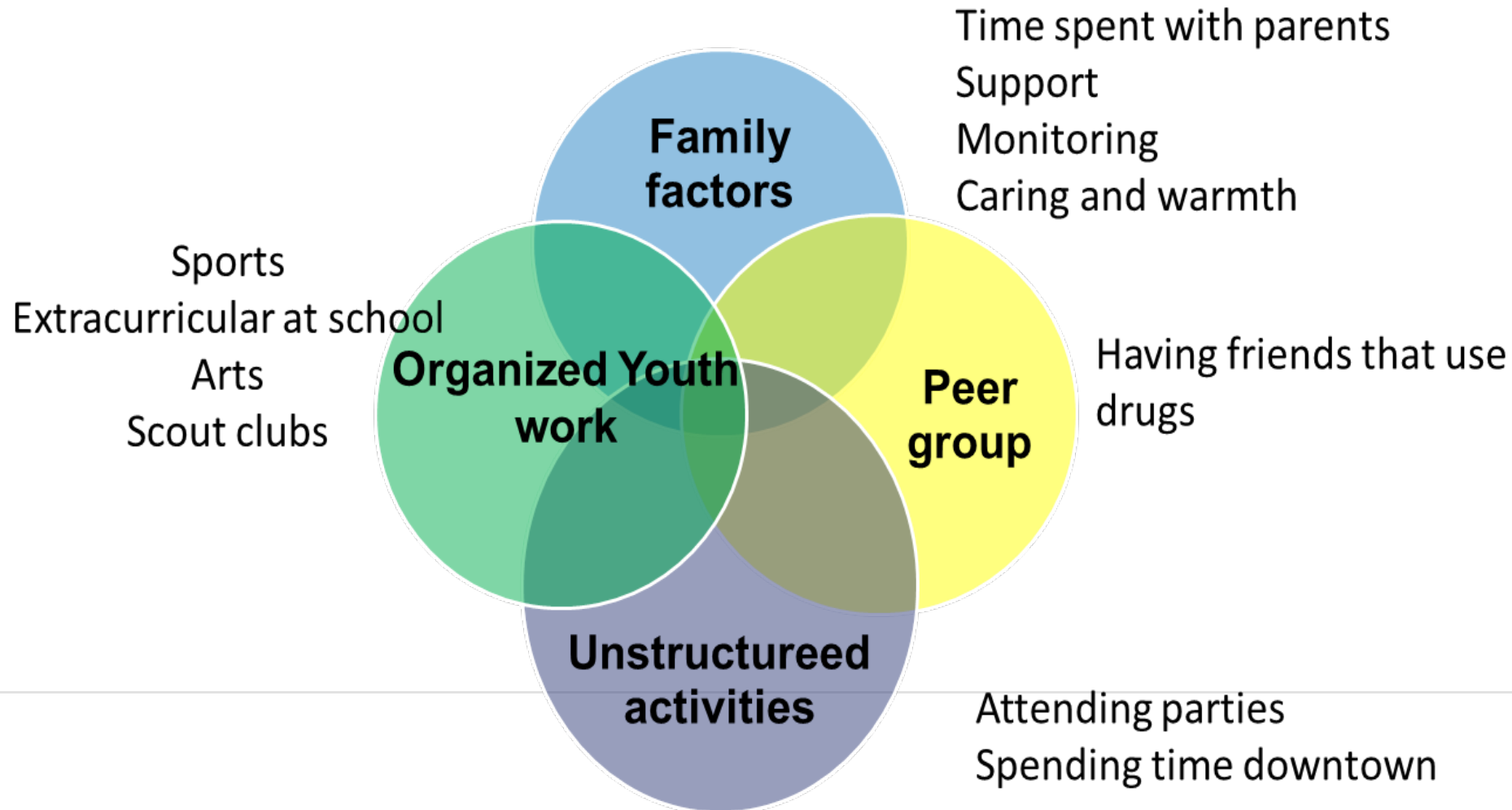
Evidence base

Community approach

Research → policy → practice

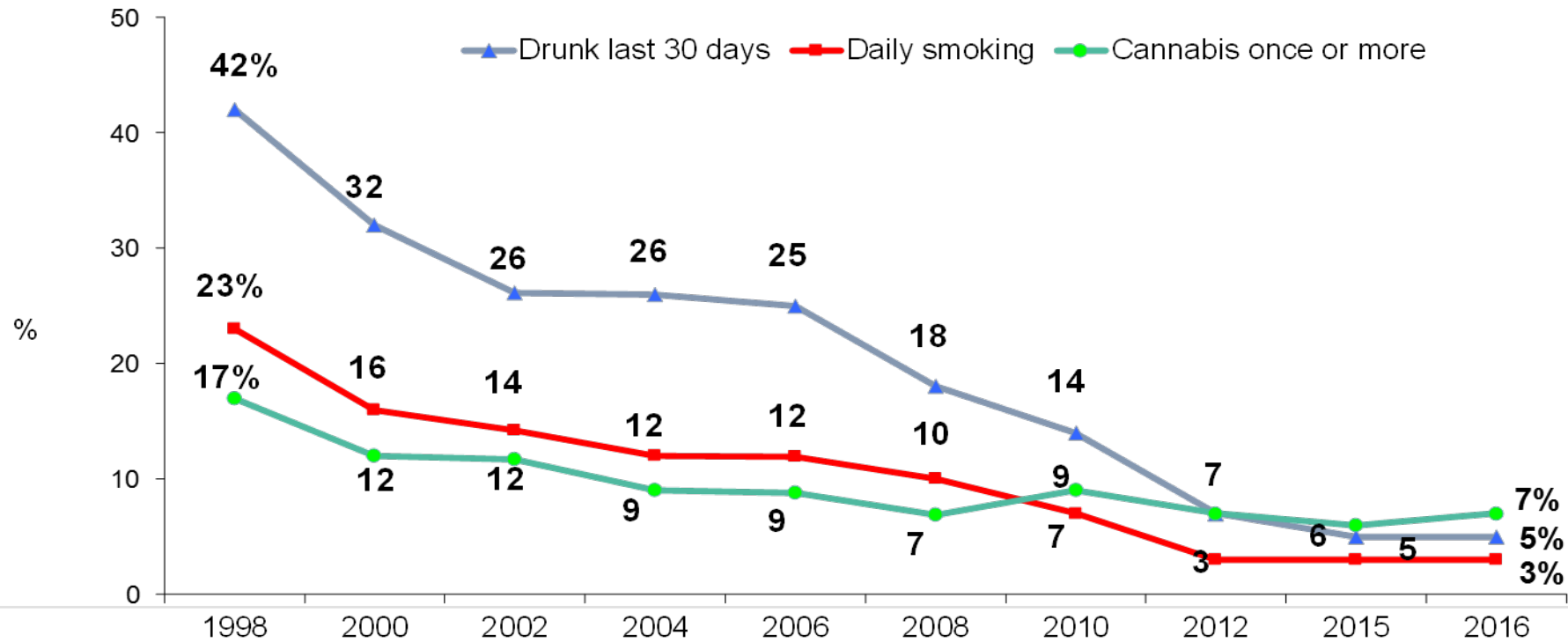
Icelandic Centre for Social Research and Analysis

# Policy based on research findings



# Proven Actual Results!

## Positive development over 20 years



## In Summary, the Icelandic Model Demonstrates

- ▶ Substance use follows Peer Cohorts
- ▶ Unstructured unsupervised time (Latch Key Kids) is the major factor
- ▶ Early Alcohol and Tobacco use predicts future harder drug use
- ▶ Preventing behaviors saves the entire peer cohort!



## Other Researchers Agree: Peer Support Groups Enhance the Icelandic Model

Peer Support Groups like Narcotics Anonymous and Alcoholics Anonymous Work through structured social interactions.

Confirms Icelandic Model of Parental/Peer cohort modeling

Addictive Behaviors, Volume 44, May 2015, Pages 35-42

“The Social Identity Model of Cessation Maintenance: Formulation and initial evidence”

SCHOOL AGED SUBSTANCE USE PREVENTION PROGRAMS

UTILIZE PEER SUPPORT GROUP ATTENDANCE AS PREVENTION OF ABUSE

PROMOTE ALTERNATIVES TO OPIOID TREATMENT

Adapt The Icelandic Model,  
IT WORKS!

**THANK YOU**